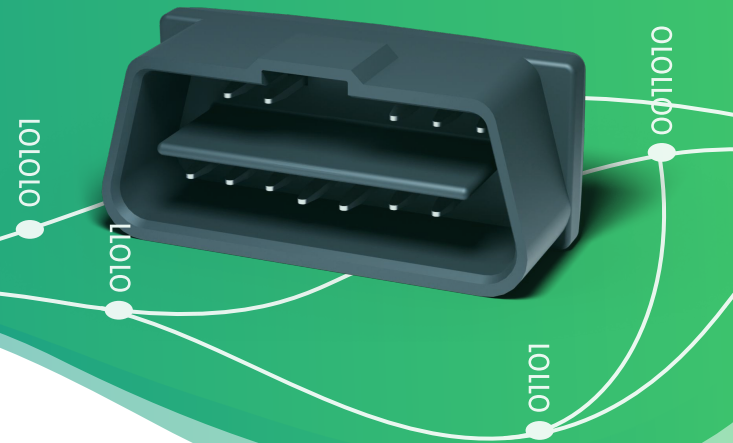








## cPlug - OBD Plug

Small and smart! Provides an unprecedented unique connection to the vehicle.



### Small. Clever. Connected.

It is our aim to develop the smallest, most elegant and most OBD connector that meets the highest requirements. State-of-the-art, sophisticated development in a smart design!

Designation	cPlug Pro
 Power supply	10 V to 17 V
 Li-Ion battery	optional
Li-Ion battery capacity	200 mAh
 Prozessor	Arm Cortex M4 (64 MHz, FPU)
 Flash memory	512 kB
 Bluetooth LE	inklusive
Bluetooth LE Standards	Bluetooth 5 Bluetooth mesh
 Supported OBD protocols	ISO 15765-4 ISO 14230-4 ISO 9141-2 SAE J1850 VPW SAE J1850 PWM Single Wire CAN Medium Speed CAN ISO 15765 ISO 11898 SAE J1939

## Designation

## cPlug Pro



Operating temperature

-35 °C to +85 °C except for the battery



Dimensions

Length 17,6 mm  
Width 40,6 mm  
Height 17,1 mm

Certificates

ETSI EN300 328  
ETSI EN301 489-1  
IEC 61000-3-2:2014  
IEC 61000-3-3:2013IEC 62368-1:2014  
CISPR 32:2015, 35:2016  
ECE Nr. 10  
FCC 47 CFR Part 15